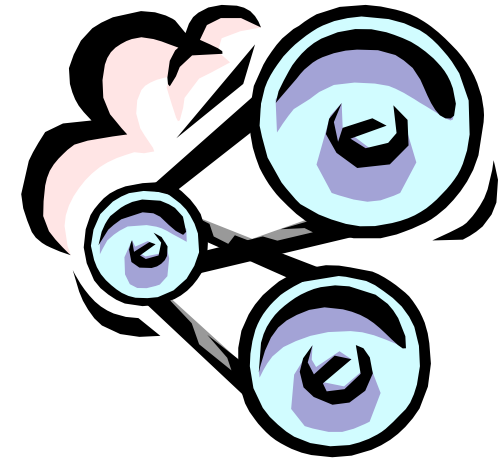
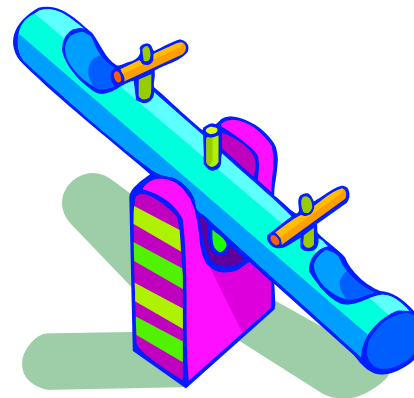


# SIMPLE MACHINES

---



# FORCES AND MOTION

---

- Force is a push or a pull.
- The amount of force you have to use on an object depends on its mass.
- Motion is a change in position.
- Every motion is started by a force.
- Speed is *how fast* something moves over a certain distance.

# GRAVITY

---

- Gravity is the force that pulls objects toward each other.
- The more mass each object has the more gravity pulls them to each other.
- Weight is how we measure the pull of gravity on an object.

# WORK

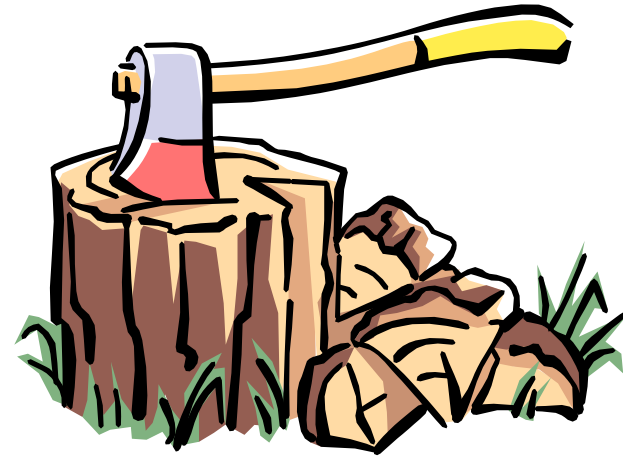
---

- Work is the measure of force it takes to *move* an object a certain distance.
- Scientifically work is done *only* when an object is moved through a distance.
- Work can be fun!
  - dribbling a basketball
  - throwing a football
  - riding a bike

# WEDGE

---

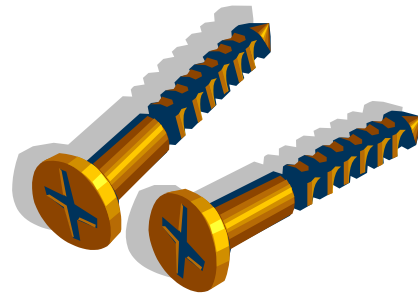
- ❑ A machine used for slicing.



# SCREW

---

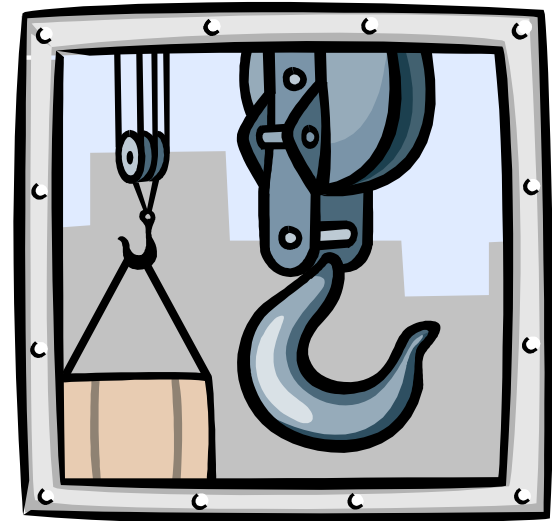
- A screw is a machine with grooves that winds round and round in a spiral.



# PULLEY

---

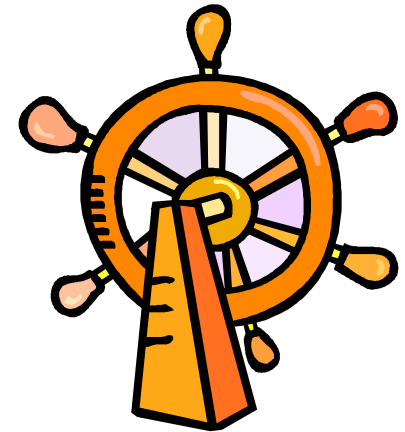
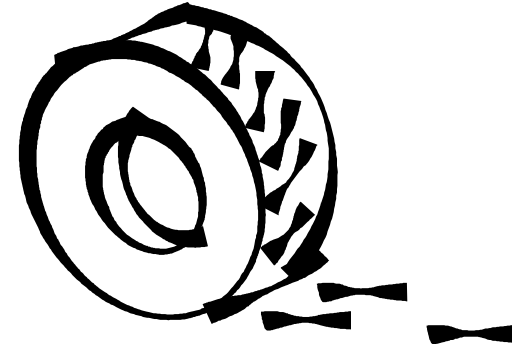
- ❑ A special kind of wheel that changes the direction of the force.
- ❑ When you pull down the object goes up.



# WHEEL AND AXLE

---

- ❑ Wheels are round, and they turn to make things go.
- ❑ The wheel is one of the most important inventions ever made. We rely on it for almost all transportation.





# INCLINED PLANE (RAMP OR STAIRS)

---

- ❑ A surface, often flat, set at an angle to another surface.



# LEVER

---

- A bar that moves on or around a fixed point.

